



# AMICOS™ KPM

Natural product for powdery mildew control

## Kills Powdery Mildew on Contact

*Amicos KPM is a curative, contact fungicide that controls foliar diseases on a wide variety of crops and ornamentals. Its unique multi-site activity provides quick preventative or curative control of fungal pathogens. With its active ingredient sodium chloride combined with 85% potassium bicarbonate inert ingredient, Amicos KPM is well-known for proven efficacy against plant disease, coupled with a high level of safety to workers, bees, wildlife and the environment. Amicos KPM is an ideal selection for use in disease resistance management programs.*

### Amicos KPM Is a 25(b) Exempt Pesticide

EPA established FIFRA 25(b) exempt pesticides use to address the use of nontoxic food grade materials for use as pesticides without having to obtain an EPA pesticide registration. The pesticide active and inert ingredients must be demonstrably safe for the intended use.

### Key Benefits of Amicos KPM

- Optimized formulation reduces surface tension and increases contact with pathogen
- Industry standard knockdown for powdery mildew in conventional and organic production
- Soluble powder may be used alone or in tank mixes with most pesticides and fertilizers

### Product Efficacy and Formulation

- Proven efficacy over the past six years – as effective for disease control as Kaligreen®.
- High-quality formulation goes into suspension quickly and maintains suspension well.
- Excellent crop safety – no marking or crop injury occurring on treated crops.
- Tank mix compatibility/flexibility is equal to competing KPM products on the market.

### Application Rates and Use

Amicos KPM should be applied at the first sign of disease and may be applied up to the day of harvest. The use of non-acidifying spreader/stickers or oil based products will aid in ensuring thorough coverage and optimum contact with the disease organism. Keep spray solution above pH 7 (optimal range is 7.7-8.5). If the spray solution is below pH 7 it will degrade the bicarbonate.

### Regulatory

- Labeled for use on over 40 crops
- Organic – NOP compliant and WSDA organic listed
- REI of 0 hours, 0-day PHI, residue-exempt



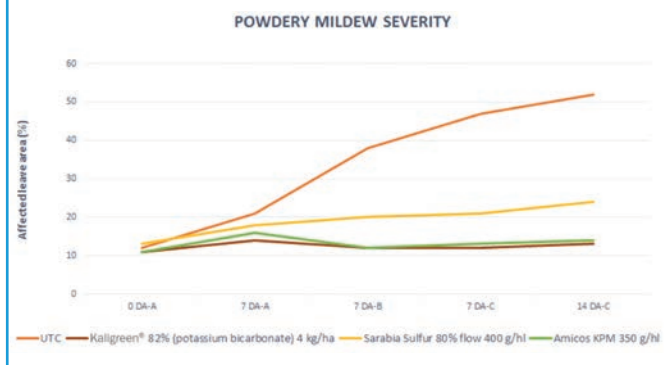
**Sym-Agro**

Distributed by Sym-Agro  
[www.sym-agro.com](http://www.sym-agro.com)

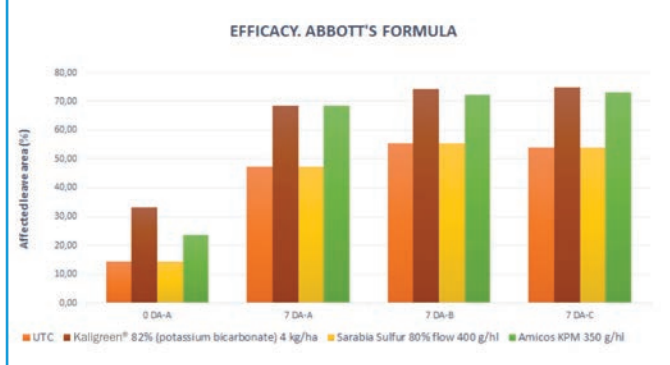
# AMICOS™ KPM

Natural product for powdery mildew control

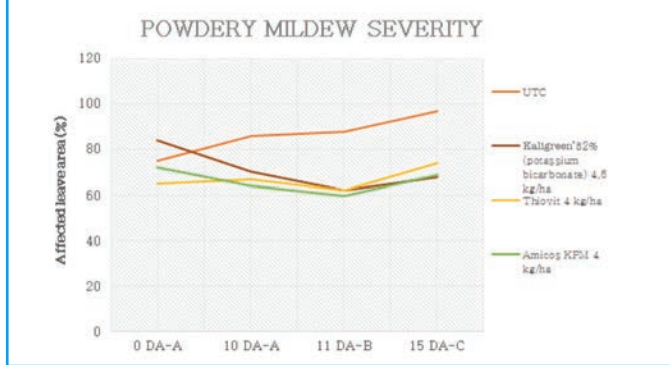
Efficacy against powdery mildew on grape vine 3 apps; interval 7 days



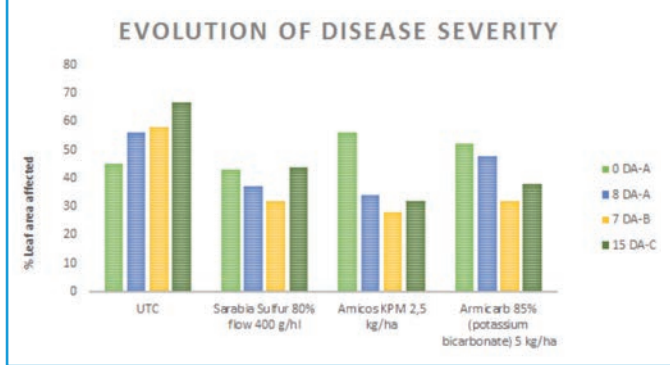
Efficacy against powdery mildew on grape vine 3 apps; interval 7 days



Efficacy against powdery mildew on grape vine 3 apps; interval 2 weeks



Efficacy against powdery mildew on grape vine 3 apps; interval 1-2 weeks



Ask your Ag Retailer or contact:  
 Don Yadon 559-393-3020  
 Don@sym-agro.com

**SymAgro**

Distributed by Sym-Agro  
 www.sym-agro.com